

# MONTEREY ON THE LAKE

WELLINGTON - P. U. D.

SHEET 3 OF 6 SHEETS

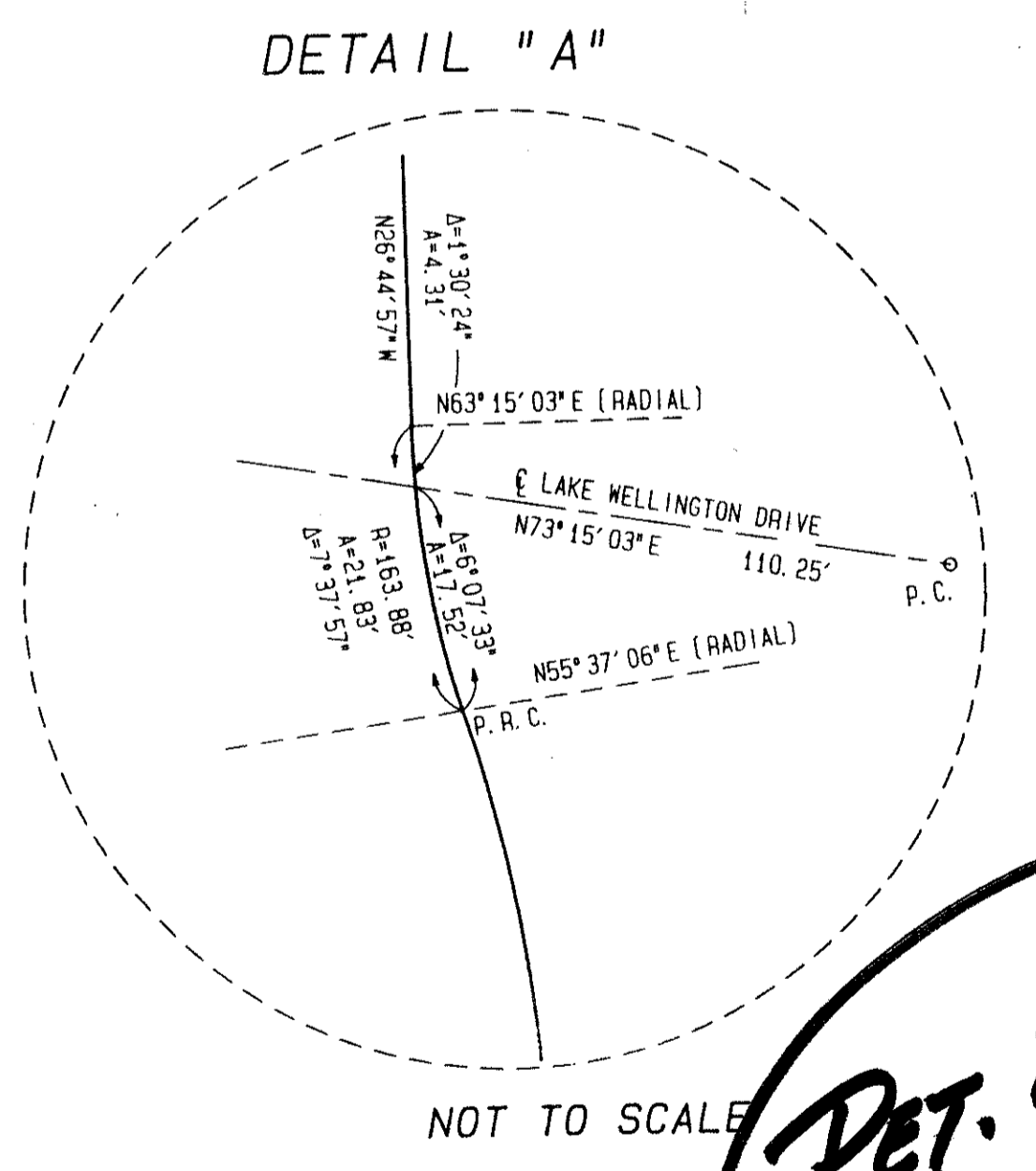
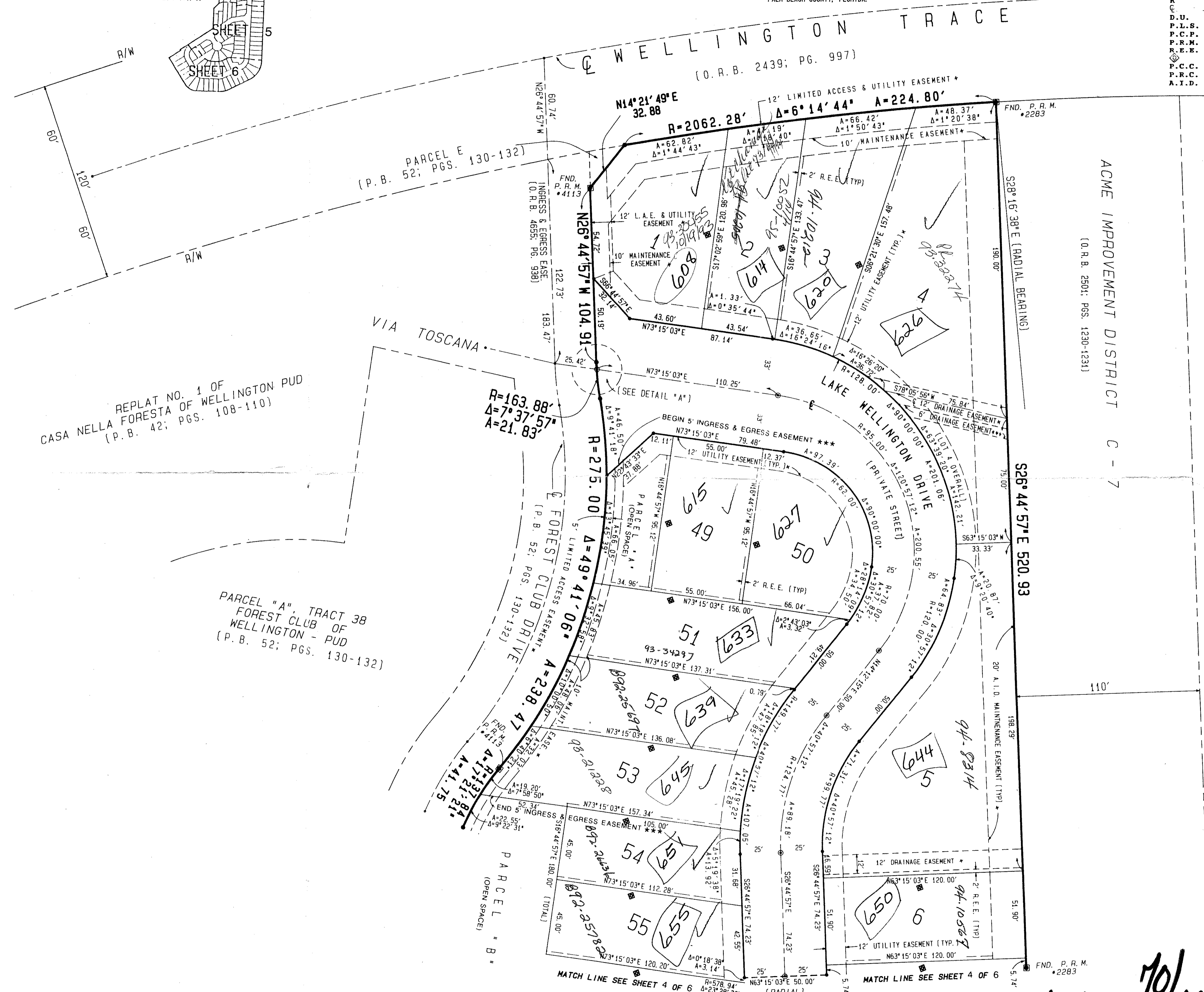
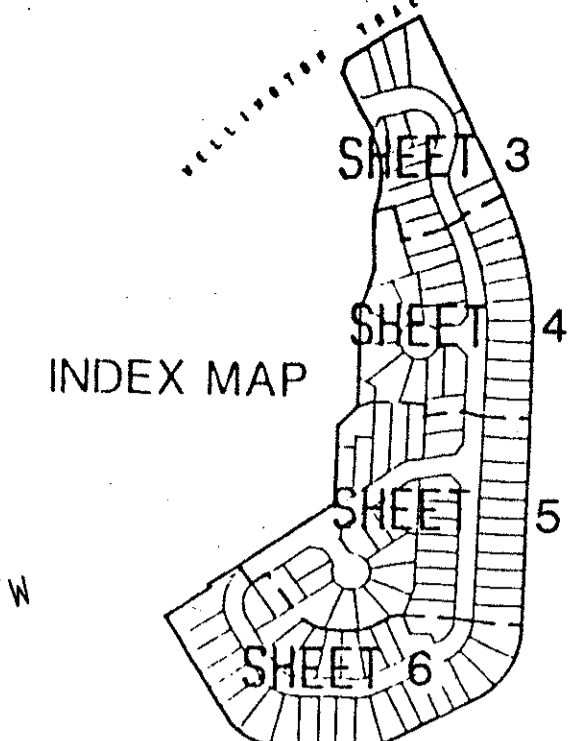
BEING A REPLAT OF LAKE WELLINGTON ESTATES, P. U. D.; WELLINGTON - P. U. D. AS RECORDED IN PLAT BOOK 63, PAGES 18 AND 19, OF THE PUBLIC RECORDS OF PALM BEACH COUNTY, FLORIDA.

AUGUST 1992

LYING IN PART OF SECTIONS 3 AND 4, TOWNSHIP 44 SOUTH, RANGE 41 EAST PALM BEACH COUNTY, FLORIDA.

- 0332-101
- LEGEND**
- O.R.B. = OFFICIAL RECORD BOOK
  - R/W = RIGHT-OF-WAY
  - P.B. = PLAT BOOK
  - PGS. = PAGES
  - MAINT. EASE. = MAINTENANCE EASEMENT
  - P.U.D. = PLANNED UNIT DEVELOPMENT
  - L.A.E. = LIMITED ACCESS EASEMENT
  - A = ARC LENGTH
  - Δ = CENTRAL ANGLE
  - R = RADIUS
  - C = CENTERLINE
  - D.U. = DWELLING UNIT
  - P.L.S. = PROFESSIONAL LAND SURVEYOR
  - P.C.P. = PERMANENT CONTROL POINT
  - P.R.M. = PERMANENT REFERENCE MONUMENT
  - R.E.E. = ROOF ENCROACHMENT EASEMENT
  - ⊙ = DENOTES ZERO LOT LINE
  - P.C.C. = DENOTES POINT OF COMPOUND CURVATURE
  - P.R.C. = DENOTES POINT OF REVERSE CURVATURE
  - A.I.D. = ACME IMPROVEMENT DISTRICT

# 16



**PET. 86-32H  
COLLECT**

0332-101

**Dailey-Fotopay, inc.**  
land surveyors, planners, engineers  
5050 10th Avenue North, Suite A - Lake Worth, Florida 33463-2602  
Phone 407/965-8787

MONTEREY ON THE LAKE 10/16

TAZ = 727

SUBDIVISION \* Monterey on the Lake  
BOOK 70 PAGE 16  
FLOOD ZONE B FLOOD MAP # 1508  
QUAD # 6277 ZONING AR  
SE ZIP CODE 33414  
PUD NAME  
324100741

REPLAT NO. 1 OF  
CASA NELLA FORESTA OF WELLINGTON PUD  
(P.B. 42; PGS. 108-110)

PARCEL "A", TRACT 38  
FOREST CLUB OF  
WELLINGTON - PUD  
(P.B. 52; PGS. 130-132)

PARCEL E  
(P.B. 52; PGS. 130-132)

FOREST CLUB DRIVE  
(P.B. 52; PGS. 130-132)

MATCH LINE SEE SHEET 4 OF 6

MATCH LINE SEE SHEET 4 OF 6